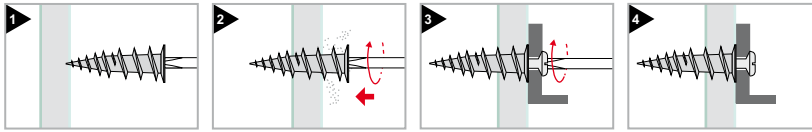


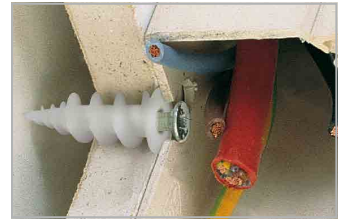
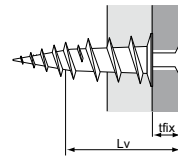


**TAN**

Tassello autopercorante in nylon per cartongesso



spessore fissabile = tfix  
 lunghezza vite = Lv  
 $Lv = tfix + 22mm$



**Nuova geometria**  
**Utilizzo anche su**  
**cartongesso a doppia-lastra**

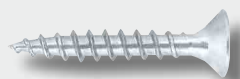


Tassello in nylon

| Codice      | Tassello<br>Ø x L | Per viti<br>Ø | Conf. | Imballo |
|-------------|-------------------|---------------|-------|---------|
| 65505015035 | 15x35             | 3 - 4,5       | 100   | 3200    |

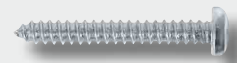


**S31** pag. 73



**VBU** pag. 272

**CONSIGLI  
 PER GLI  
 ACQUISTI**



**AF-STEEL TC** pag. 228

**FRİULSIDER 143**