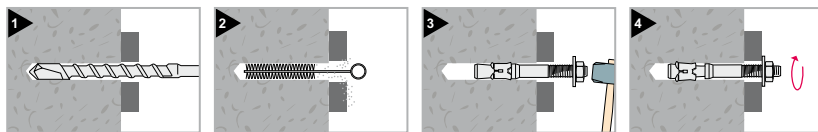


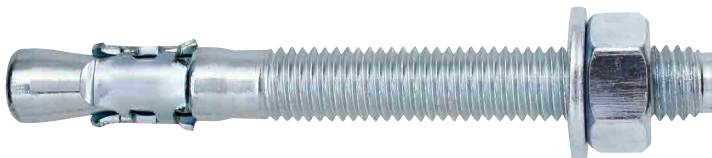
# FM-753

Ancorante pesante passante



**CERTIFICAZIONI**  
Calcestruzzo non fessurato

Assemblato  
zincato bianco



Codice*	Dim. Ø x L	Lunghezza filetto	Sp. max fissabile	Conf.	Imballo
75320b06045 <sup>(1)(2)</sup>	M6x45	20	3	200	2000
75320b06065	M6x65	40	15	100	1000
75320b06085	M6x85	60	35	100	1000
75320b06100	M6x100	60	50	50	500
75320b08050 <sup>(1)(2)</sup>	M8x50	23	5	100	1000
75320b08065	M8x65	38	7	100	1000
75320b08075	M8x75	48	15	100	400
75320b08090	M8x90	63	30	100	400
75320b08115	M8x115	83	55	100	400
75320b08135	M8x135	88	75	100	400
75320b08165	M8x165	88	105	50	200
75320b10060 <sup>(1)(2)</sup>	M10x60	28	5	50	500
75320b10075	M10x75	43	5	50	500
75320b10090	M10x90	55	20	50	200
75320b10100	M10x100	60	30	50	200
75320b10120	M10x120	85	50	50	200
75320b10145	M10x145	85	75	50	200
75320b10170	M10x170	85	100	50	200
75320b10210 <sup>(2)</sup>	M10x210	85	140	25	100
75320b12080 <sup>(1)(2)</sup>	M12x80	40	7	50	200
75320b12100	M12x100	58	10	50	200
75320b12110	M12x110	68	20	50	200
75320b12120	M12x120	68	30	25	100
75320b12135	M12x135	93	45	25	100
75320b12160	M12x160	93	70	25	100
75320b12185	M12x185	93	100	25	100
75320b12200 <sup>(2)</sup>	M12x200	93	115	20	80
75320b12220 <sup>(2)</sup>	M12x220	93	135	20	80
75320b12240 <sup>(2)</sup>	M12x240	93	155	20	80
75320b12255 <sup>(2)</sup>	M12x255	93	170	20	80
75320b12285 <sup>(2)</sup>	M12x285	93	200	20	80
75320b12300 <sup>(2)</sup>	M12x300	93	215	20	80
75320b12325 <sup>(2)</sup>	M12x325	93	240	20	80
75320b12355 <sup>(2)</sup>	M12x355	93	270	20	-
75320b14100	M14x100	50	3	25	100
75320b14110	M14x110	60	10	25	100
75320b14130	M14x130	65	30	25	100
75320b14150	M14x150	90	50	25	100
75320b14170	M14x170	90	70	25	100
75320b14200	M14x200	90	100	25	100
75320b16110 <sup>(1)(2)</sup>	M16x110	53	15	20	80
75320b16125	M16x125	68	10	20	80
75320b16145	M16x145	88	30	20	80
75320b16175	M16x175	88	60	20	80
75320b16215	M16x215	88	100	15	60
75320b16230 <sup>(2)</sup>	M16x230	88	115	10	40
75320b16250 <sup>(2)</sup>	M16x250	88	135	10	40
75320b16270 <sup>(2)</sup>	M16x270	88	155	10	40
75320b16285 <sup>(2)</sup>	M16x285	88	170	10	40
75320b16320 <sup>(2)</sup>	M16x320	88	205	10	40
75320b20170 <sup>(2)</sup>	M20x170	60	30	10	40
75320b20215 <sup>(2)</sup>	M20x215	60	75	10	40
75320b20260 <sup>(2)</sup>	M20x260	60	120	10	-
75320b24160 <sup>(1)(2)</sup>	M24x160	60	10	10	40
75320b24180 <sup>(2)</sup>	M24x180	60	10	10	40
75320b24200 <sup>(2)</sup>	M24x200	80	30	10	-
75320b24220 <sup>(2)</sup>	M24x220	100	50	10	-
75320b24260 <sup>(2)</sup>	M24x260	100	90	10	-
75320b24310 <sup>(2)</sup>	M24x310	100	140	10	-

\*Su richiesta è disponibile la versione con rondella larga DIN 9021. Per informazioni contattare gli uffici commerciali.

<sup>(1)</sup> Ancoranti con profondità di posa ridotta  
<sup>(2)</sup> Misure non certificate CE