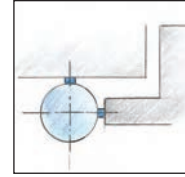
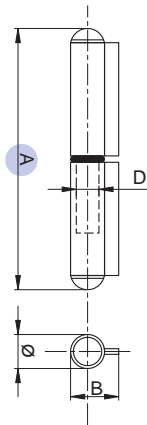


Art. 400**Cerniere da saldare a tappo con perno fisso**

Paumelles a souder avec pivot fixe
 Plug hinges to be welded with fixed pin
 Pernios soldar pernio fijo

**Art. 400**

in acciaio lucido - perno in acciaio zincato
 acier naturel - pivot zingués
 natural steel - white galvanized pin
 hierro natural - pernio cingados

Art. 900

Inox

A mm	60	80	100	120	140	170	200
Ø mm	12	12	13,5	14,5	16	17	20
B mm	17	17	19	20	21	23,5	26,5
D mm	8	8	9	10	11	12	14
Capacity kgx2	40	50	70	90	90	100	120
CODICE ART.	400060	400080	400100	400120	400140	400170	400200
N° Pcs	24	24	24	24	24	12	12
Kg.	1,000	1,750	2,550	3,620	5,030	2,900	4,600